

# Cobra®

## 7750 PLT

### Operating Hints

Revision 6



**This is a hypertext document.**  
**Click on a topic and it will jump to the desired page.**

## **SECTION 1: INSTALLATION**

1.1 - [Installation Hints](#)

## **SECTION 2: SYSTEM SET-UP**

- 2.1 - [Setting up a truck](#)
- 2.2 - [Description of weight settings](#)
- 2.3 - [Description of length settings](#)

## **SECTION 3: USING THE MAP SCREEN**

- 3.1 - [Panning](#)
- 3.2 - [Information Tab \(travel information\)](#)

## **SECTION 4: NAVIGATING**

- 4.1 - [Entering an address](#)
- 4.2 - [Entering an intersection](#)
- 4.3 - [Navigating to a city \(no specific address\)](#)
- 4.4 - [Preview a route \(starting from your current location\)](#)
- 4.5 - [Preview a route \(starting from a different location\)](#)
- 4.6 - [Viewing the turn list \(while you are following a route\)](#)
- 4.7 - [Changing the route criteria after you have programmed a destination](#)
- 4.8 - [How to do a detour](#)
- 4.9 - [Stopping a trip](#)
- 4.10 - [Adding an intermediate destination](#)
- 4.11 - [Creating a Multi-Route](#)
- 4.12 - [Running a Multi-Route](#)
- 4.13 - [How to tap on the map screen and save the location into the address book](#)

## **SECTION 5: POINTS OF INTEREST (POI)**

- 5.1 - [How to show / hide POI icons on the map screen](#)
- 5.2 - [Searching for POIs](#)
- 5.3 - [Search for truck stops by amenity](#)

## **SECTION 6: LOGS**

- 6.1 - [What is the Mileage Log?](#)
- 6.2 - [Viewing / resetting the Mileage Log](#)
- 6.3 - [Saving the Mileage Log](#)
- 6.4 - [Backing up the Mileage Log](#)
- 6.5 - [Using the Hour Log](#)
- 6.6 - [Resetting / Customizing the Hour Log](#)

## **SECTION 7: SOFTWARE & DATABASE UPDATES**

- 7.1 - [How to check the software version and update the software](#)
- 7.2 - [How to check the map version and update the maps](#)

## **SECTION 8: TROUBLESHOOTING**

- 8.1 - [It says "Some of the roads on this route are not on the National Network"](#)
- 8.2 - [Poor routing](#)
- 8.3 - [It says "Route Calculate Failure"](#)
- 8.4 - [My unit will not turn on](#)
- 8.5 - [How can I tell whether I am receiving satellites?](#)
- 8.6 - [Auto-brightness is not working properly](#)
- 8.7 - [I do not see POI icons on the map screen](#)
- 8.8 - [Trouble locking onto satellites](#)
- 8.9 - [How to do a Master Reset](#)

## **SECTION 9: MISC**

- 9.1 - [The STAA National Network](#)
- 9.2 - [Adjusting the volume](#)
- 9.3 - [Viewing your “current location”](#)
- 9.4 - [Observing satellite lock status](#)
- 9.5 - [Viewing your elevation \(altitude\)](#)
- 9.6 - [Power light status](#)
- 9.7 - [Backing up the Address Book](#)
- 9.8 - [Saving / backing up the Mileage Log](#)

## **SECTION 10: OPTIONAL ACCESSORIES**

- 10.1 - [SD Card Slot](#)
- 10.2 - [External antenna](#)



## 1.1) Installation Hints

- Make sure to clean the windshield and suction cup before installation. Use glass cleaner or rubbing alcohol.
- To attach the bracket to the windshield:
  1. Make sure the locking lever is in the UP position
  2. Lightly moisten the suction cup
  3. Firmly hold the suction cup against the windshield
  4. Push the locking lever.
- The 7750 PLT comes with a rubber bumper to protect your dash. If you let the unit rest on the dash, stick the rubber bumper onto the bottom of your unit.
- The GPS antenna is located at the top of the unit. During installation, arrange the mounting bracket so that it does not block the top of your unit.

### Using the Mounting Disc

Note: The adhesive pad is a separate piece. The pad must first be stuck to the disk.

1. Find a flat part of the dash to attach the mounting disc.
2. Clean the dash with the enclosed alcohol pad.
3. Clean the DULL side of the mounting disk with the alcohol pad (not the shiny side).
4. Peel the backing from one side of the adhesive pad and then press the pad onto the DULL side of the mounting plate.
5. Peel the other backing from the adhesive pad and then press the mounting plate into position on the dash.
6. Clean both the mounting plate and the suction cup with the alcohol pad.
7. The mounting bracket (suction cup) can now be attached to the mounting plate.

**Once the plate is installed, it CANNOT be reused!**

### **NOTE:**

To create a secure mount, the plate uses a strong adhesive. Please note that should you ever want to remove the plate, it might leave a mark on your dash. So please decide in advance whether you really want to use it.

[<back to menu>](#)

## 2.1) Setting up a truck

1. Tap anywhere on the map screen.
2. Tap on SETTINGS (at the top).
3. Tap on MY TRUCK.

You should now be at this screen:



Scroll through the pages to find your truck. After selecting the truck you will get this screen:

The screenshot shows the 'ENTER TRUCK INFORMATION' screen. It contains a table with the following data:

Name	Truck Type
Truck 1	3 Axle Tractor 2 Axle Trailer
Weight	Width
70000lbs/105000lbs/297500lbs/0/300000lbs	96in
Length	Height
65ft/59ft/48ft/0/40ft/37ft/45ft	13ft 6in
Load Type	
None	

At the bottom of the screen are three buttons: a white 'X' on a dark background, a 'Save' button, and a white left-pointing arrow on a dark background.

You can accept the default settings, or you can change them. To make a change, simply tap on one of the fields.

If you are hauling hazardous material, then be sure to change the LOAD TYPE.

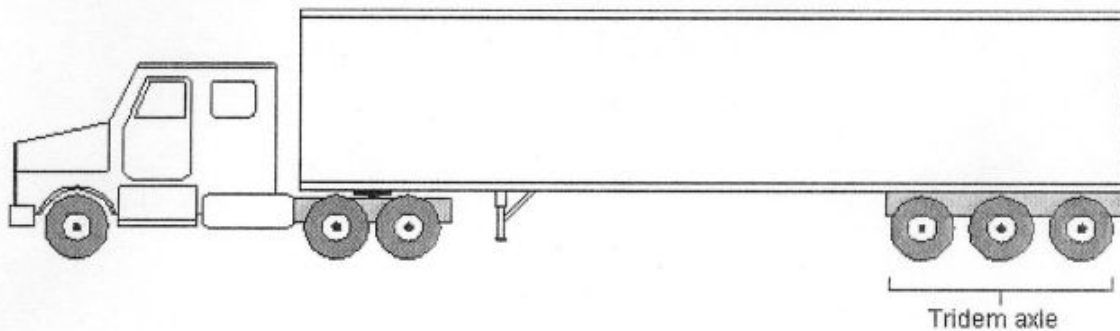
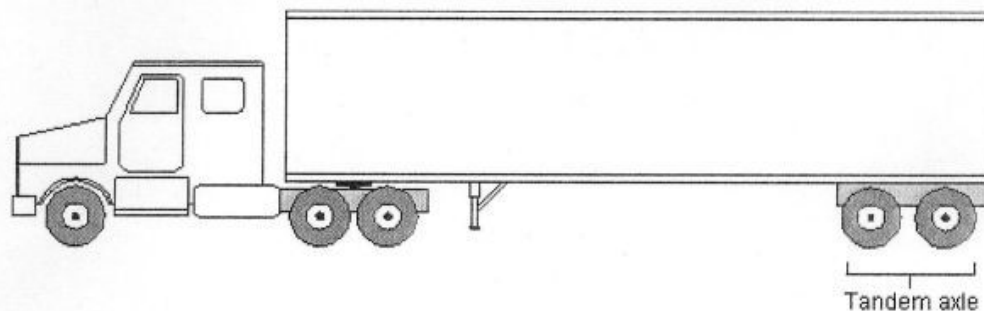
There are a lot of numbers for weight and length. If you tap on the weight field or the length field you will see a breakdown. The next 2 pages gives an explanation of the different choices.

[<back to menu>](#)

## 2.2) Description of Weight Settings

Weight			
<b>Gross Weight</b> 70000lbs	CLEAR	<b>Weight per Axel</b> 10500lbs	CLEAR
<b>Tandem Axle Weight</b> 29750lbs	CLEAR	<b>Tridem Axle Weight</b> 0	CLEAR
<b>Unladen Weight</b> 30000lbs	CLEAR		

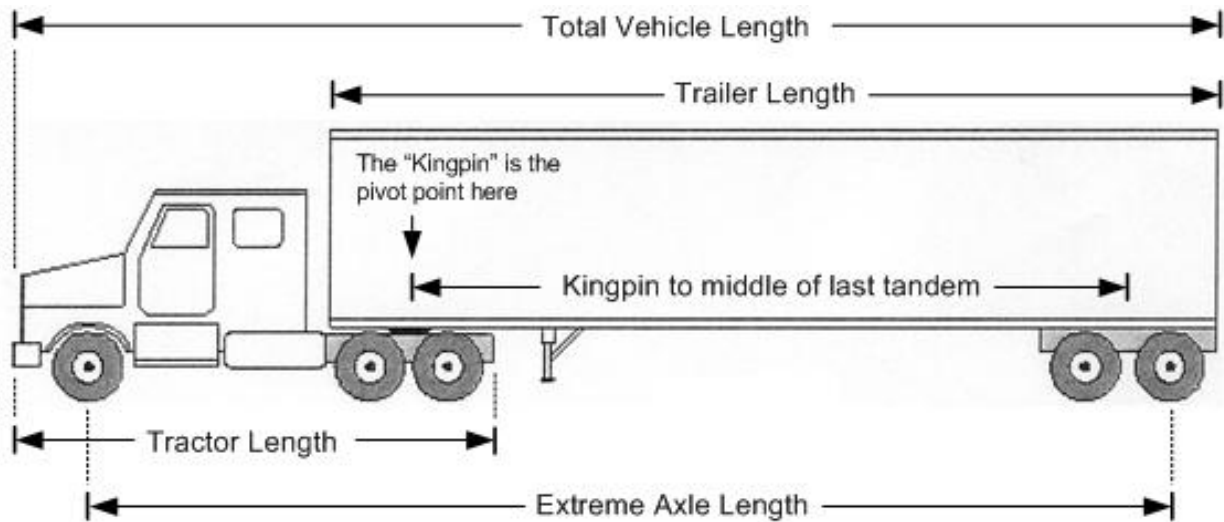
- Gross Weight:** The total weight of the truck when it is loaded.
- Weight per Axle:** You must calculate this using standard, accepted methods.
- Tandem Axle Weight:** The weight on the double-axle at the back of the truck.
- Tridem Axle Weight:** The weight on the triple-axle (see images below).
- Unladen Weight:** The total weight of the truck when the trailer is empty.



[<back to menu>](#)

### 2.3) Description of Length Settings

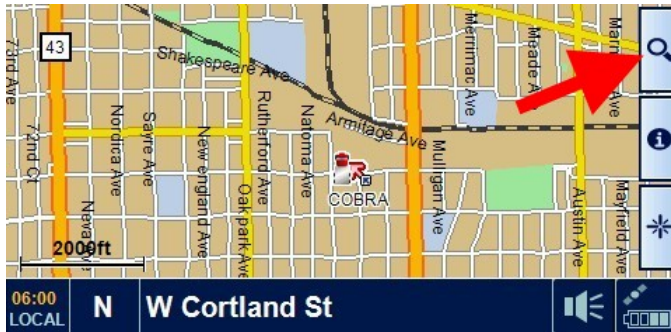
Length	
<b>Total Length</b> 65ft	CLEAR
<b>Trailer Length</b> 48ft	CLEAR
<b>Kingpin to Last Axle</b> 40ft	CLEAR
<b>Kingpin to End of Trailer</b> 45ft	CLEAR
<b>Extreme Axle Length</b> 58ft	CLEAR
<b>Tractor Length</b> 0	CLEAR
<b>Kingpin to Middle of Last Tandem</b> 37ft	CLEAR



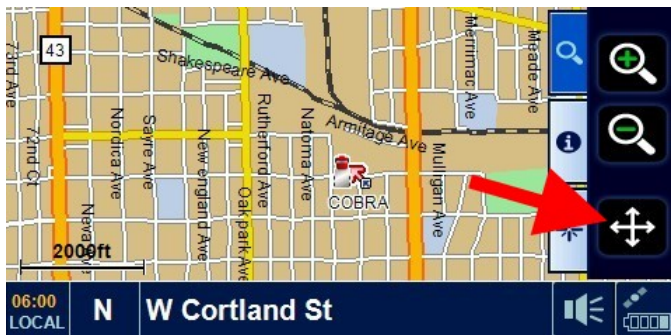
[<back to menu>](#)

### 3.1) Panning

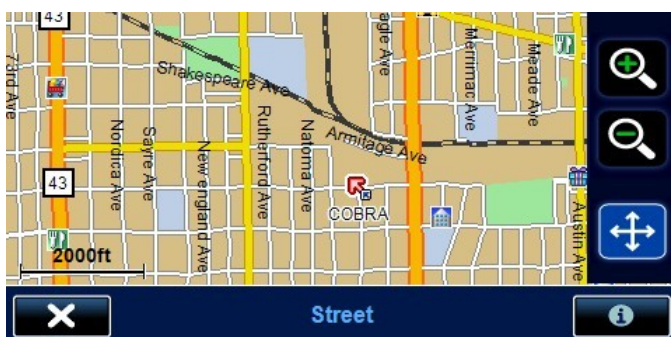
STEP 1 – Tap on the magnifier icon



STEP 2 – Tap on the crosshair icon



Your screen should now look similar to this:



- ▶ To pan, drag your finger across the screen.
- ▶ Tap on the + and – buttons to zoom in and out.
- ▶ To exit, tap on the X in the lower-left corner.

For info about the ‘i’ (information) icon in the lower-right, please click [<HERE>](#).

[<back to menu>](#)

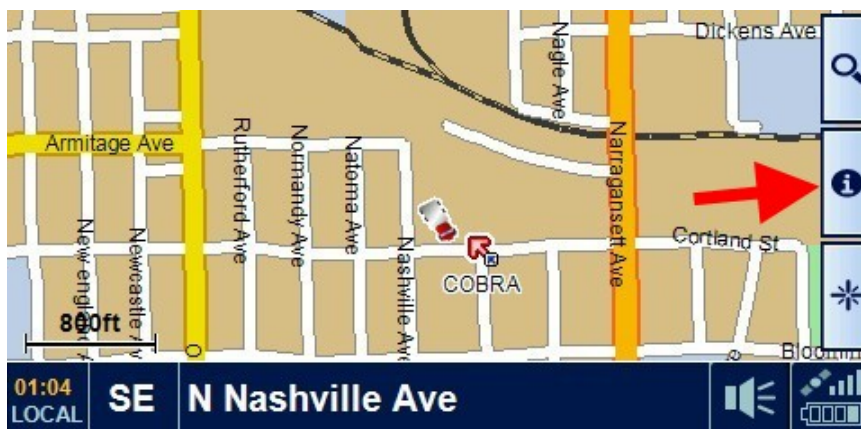
### 3.2) Information Tab

The Information tab provides handy travel information:

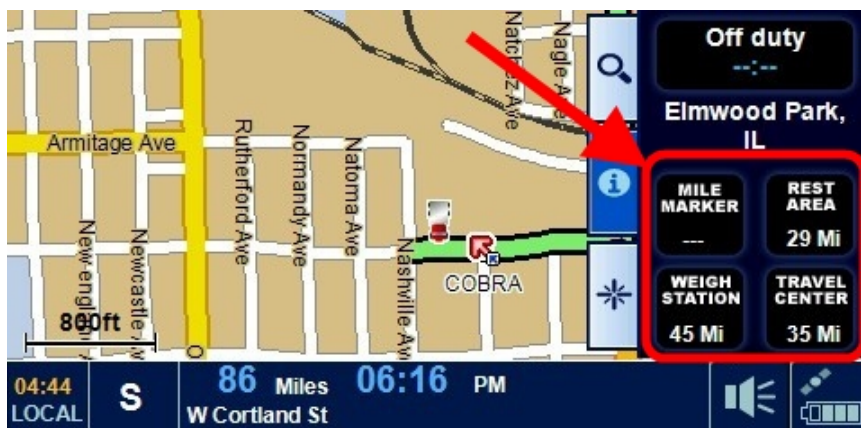
- The closest mile marker
- The distance to the next Rest Area along the route
- The distance to the next Weigh Station along the route
- The distance to the next Travel Center along the route

Mile markers are always displayed. Rest Areas, Weigh Stations, and Travel Centers are only displayed if you are following a route. It will then show the distance to the next one along the route, within 1 mile of your route (for example you may need to exit and drive up to 1 mile).

From the map screen, simply tap on the Information tab:



You will then see the travel information:



If you tap on one of the fields (for example, the TRAVEL CENTER field), then you will get a detailed listing of the locations that you will pass along the route:



[<back to menu>](#)

## 4.1) Entering an Address

1. Tap anywhere on the MAP screen. A menu should pop up.
2. Tap on ENTER ADDRESS

You should now be at this screen:

The screenshot shows the 'ENTER ADDRESS' screen. The title 'ENTER ADDRESS' is at the top. Below it, there are four input fields: 'State/ZIP' (Illinois), 'City' (Chicago), 'Street' (W Cortland St), and 'House No.' (6500). To the right of these fields are two buttons: 'All' and 'CLEAR'. Further right is a large blue button with a white checkmark. At the bottom, there are four buttons: a white 'X' on a dark blue background, 'MAP', 'Route Option', and a white left arrow on a dark blue background.

Tap on each field to enter the corresponding information.

When entering the street, just enter the basic street name. Here are some examples:

112 S. Main St.      enter **Main**  
5716 Highway 32    enter **32**  
1117 22nd Ave.     enter **22nd**

If you do not have a specific address, you can just enter the state and city.

When you are done, tap the checkmark ✓ or

- Tap on **MAP** to view the location on the map.
- Tap on **ROUTE** to change the routing criteria.

[<back to menu>](#)

## 4.2) Entering an intersection

1. Tap anywhere on the MAP screen
2. Tap on INTERSECTION

You should now be at this screen:



First choose the state and city.  
Then enter the two streets.

**NOTE:** If one of the streets is a number (like 2nd Street or Route 12) then enter it as the second street (Street2).

When you are done, tap the checkmark ✓ or

- Tap on **MAP** to view the location on the map.
- Tap on **ROUTE** to change the routing criteria.

[<back to menu>](#)

### 4.3) Navigating to a city

This lets you navigate to a city without entering a specific address. The 7750 PLT will choose an arbitrary address.

NOTE: In some rare occasions the 7750 PLT might choose an arbitrary address that is unreachable due to truck restrictions. If you keep getting “Route Calculate Failure”, then try entering a specific address. You could also try using Points of Interest and choosing a business within the target city.

1. Tap anywhere on the MAP screen
2. Tap on CITY CENTER

You should now be at this screen:



Enter the state and city.

- When you are done, tap the checkmark ✓ or
- Tap on **MAP** to view the location on the map.
  - Tap on **ROUTE** to change the routing criteria.

[<back to menu>](#)

#### 4.4) Preview a route (starting from your current location)

Enter an address and then click on CALCULATE. You should now be at this screen:



You have 2 options for previewing the route:

#### OPTION 1 – View the Turn List

If you tap on TURN LIST in the lower-right, you will see a list of the roads that the nav unit will take to the destination:



## OPTION 2 – View the Map Screen

If you tap on the map, you will get this screen:



From here you can zoom in and out by tapping on the + and – buttons. You can also pan around by dragging your finger across the screen.

When done, tap on the X in the lower-left corner.

After you are done previewing the route, you have 2 options:

### OPTION 1 – Accept the Route

Simply tap on the checkmark ✓

### OPTION 2 – Change the Route Options

If you tap on ROUTE OPTION at the bottom of the screen, you will get this screen:



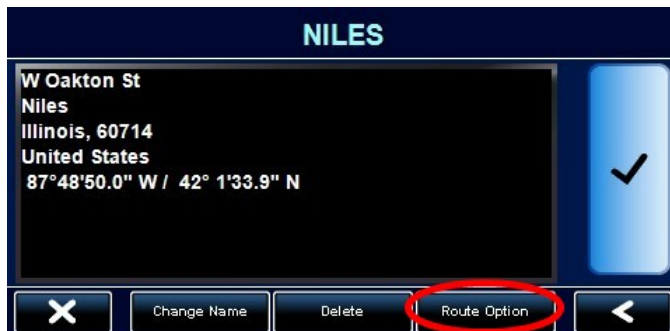
NOTE: If you tap on the “STAA” checkbox, the nav unit will try extra hard to keep you on the National Network (established truck routes) as much as possible.

[<back to menu>](#)

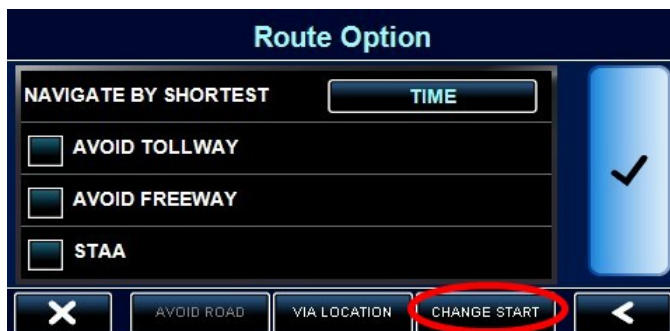
## 4.5) Preview a route (starting from a different location)

It is possible to preview a route that starts from somewhere besides your current location. For example maybe in a couple days you will be traveling from Nashville to Chicago, but you are not in Nashville right now. You can tell the 7750 PLT to start from Nashville.

1. Enter the destination address as you normally would, and then tap on ROUTE OPTION



2. Tap on CHANGE START



3. Now enter the starting address and then let your unit calculate a route.

[<back to menu>](#)

## 4.6) Viewing the turn list

The turn list is a list of all the streets that the nav unit plans to take to get you to the destination. Obviously you can only see the turn list if you have programmed a destination.

### **STEP 1 – Tap on the “star” icon in the lower-right**



### **STEP 2 – Tap on “Turn List”**



### **STEP 3 – View the turn list**

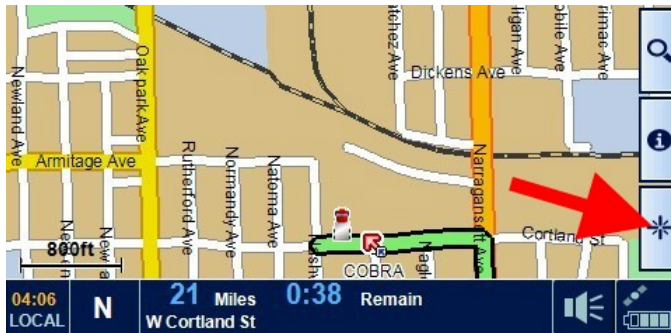


[<back to menu>](#)

## 4.7) Changing the routing after you have already programmed a destination

Perhaps the nav unit has calculated a route including toll roads, and now you have changed your mind. Or maybe you just don't like the route. Here is how to change the route options and re-calculate a new route:

### **STEP 1 – Tap on the “star” icon in the lower-right**



### **STEP 2 – Tap on “RT option”**



### **STEP 3 – Tap on “Route Option” at the bottom of the screen**



[<back to menu>](#)

## 4.8) How to do a detour

Note: This can only be performed if you have already programmed a destination.

### **STEP 1 – Tap on the “star” icon in the lower-right**



### **STEP 2 – Tap on “Detour”**



### **STEP 3 – Choose a particular road to avoid, or choose a range (i.e. the next 10 miles, etc.)**



[<back to menu>](#)

## 4.9) Stopping a trip

To cancel a route:

### **STEP 1 – Tap on the “star” icon in the lower-right**



### **STEP 2 – Tap on “Stop”**



[<back to menu>](#)

## 4.10) Adding an intermediate destination

Maybe you need to pick up a load before traveling to a final destination. You can program the pickup point as an intermediate stop.

Or maybe you are traveling to your home terminal, but you want to stop off at **Joe's Smokey Links** for some of your favorite sausages.

1. Enter the final destination and then tap on ROUTE OPTION.
2. Tap on VIA LOCATION.
3. Enter the intermediate destination.
4. Calculate the route.



The nav unit will first bring you to the intermediate destination, and then automatically direct you to the final destination.

You can add only one intermediate destination.

If you need to add more than one, then choose [Multi-Route](#) instead.

[<back to menu>](#)

## 4.11) Creating a Multi-Route

Multi-Route lets you make one long route that consists of multiple destinations. For example you can create a Multi-Route that takes you to a pick-up, makes an intermediate stop (truckstop, etc.) and then to a drop-off. Or you could program an entire day of activity that consists of multiple pick-ups and drop-offs. There is no limit to how many destinations you program.

1. Tap anywhere on the map screen.
2. Tap on **Tools** at the top.
3. Tap on **Multi Route**.

4. Tap on **Create Multi-Route**



5. Tap on **ADD**



6. Now you can choose a destination by any of the listed methods:



**Repeat steps 5 and 6 for as many destinations as desired.**

(please proceed to the next page)

7. To sort the destinations, tap on an address and then use the buttons at the bottom of the screen:



When you are done moving the destination, tap on the arrow button in the lower-right corner. You can then move another destination if desired. Just tap on it and then you can move it.

**NOTE:** The location at the top (with the orange flag) is your current destination, from where the Multi-Route will start. You cannot move this one!

8. The last step is to save the Multi-Route by tapping on [Edit Name](#).



After you save the Multi-Route, be sure to tap on the big checkmark on the right-hand side. Otherwise it will not get saved!

Click [<HERE>](#) to see how to run a Multi-Route.

[<back to menu>](#)

## 4.12) Running a Multi-Route

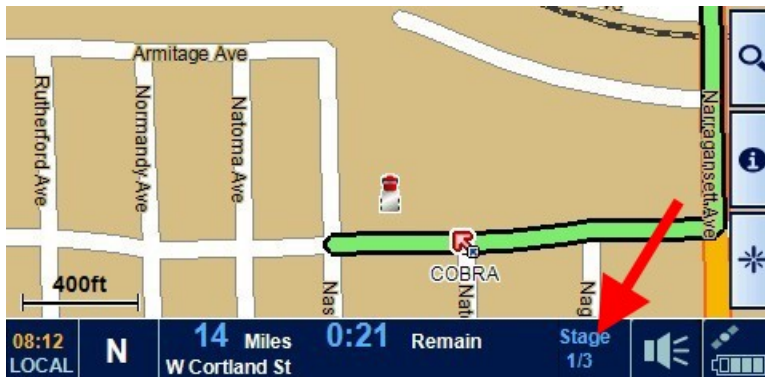
Before running a Multi-Route, you need to create one. Click [<HERE>](#) to see how to create a Multi-Route.

To run a Multi-Route:

1. Tap anywhere on the map screen.
2. Tap on **Tools** at the top.
3. Tap on **Multi Route**.
4. Choose a Multi-Route that you had saved.
5. Then tap on the checkmark to run the route.



From the map screen, you can tap on the **Stage** button:



You will then see the total miles to that stage of the Multi-Route.

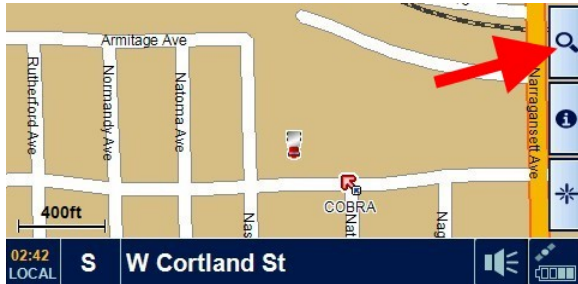
[<back to menu>](#)

### 4.13) Tap on the map screen and save the location into the address book

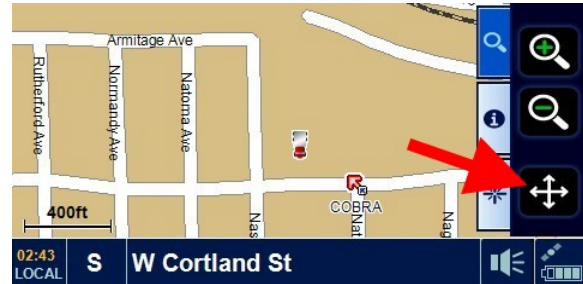
You may tap on the map screen and then save the location into the address book. Please note that you can only tap on streets and highways. No off-roading!

#### STEP 1 - Get into panning mode

Tap on the magnifier icon in the upper right...

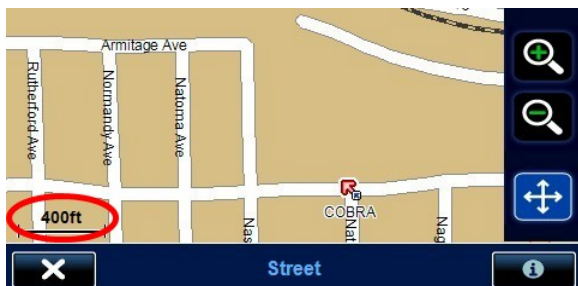


...and then tap on the crosshair icon.



#### STEP 2 – Adjust the zoom level

Tap on the + and – buttons to adjust the zoom level. You must be at 2000 ft or closer. The zoom level is displayed in the lower-left corner.



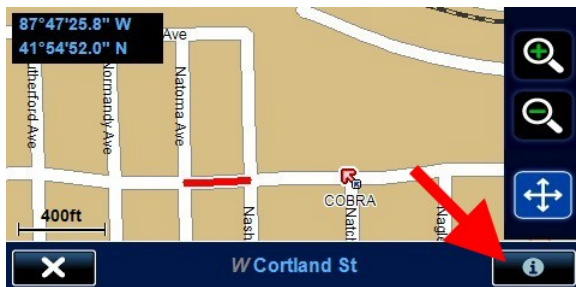
#### STEP 3 – Tap on a street

You may now tap on a street or highway. If it is a valid location, then the street segment will turn red and you will see the GPS coordinates in the upper-right corner.

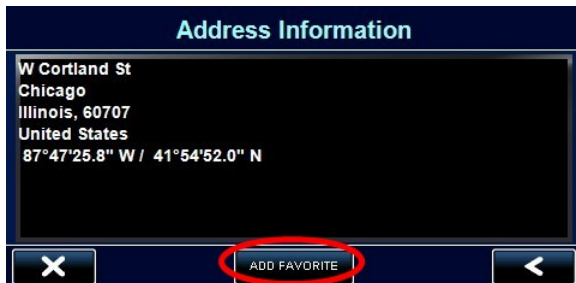


## STEP 4 – Save it!

Tap on the “i” in the lower-right corner.



Then Tap on ADD FAVORITE at the bottom of the screen.



[<back to menu>](#)

## 5.1) Show / hide POI icons

By default, the 7750 PLT will show all POI icons on the map screen. This can make for a very cluttered screen.

1. Tap anywhere on the map screen.
2. Tap on SETTINGS (at the top).
3. Tap on MAP.
4. Tap on DISPLAY POINTS OF INTEREST.

You may now select which categories (if any) to show on the map screen.

**In order to see POI icons, you must be zoomed-in far enough.**

[<back to menu>](#)

## 5.2) Searching for POIs

1. Tap anywhere on the map screen
2. Tap on POINTS OF INTEREST

When searching **By Name**, it is helpful to enter a state and city.

POIs will be listed by distance -- nearest ones first.

[<back to menu>](#)

### 5.3) Search for truck stops by amenity

It is possible to search for truck stops that have certain amenities, such as showers, laundry, internet access, etc. To search by amenity:

1. Start a POI search, and for the category choose **Promiles**. Then tap on **Truck Stops**.



2. At the bottom of the screen, tap on **Amenities**.



3. Lastly, select the desired amenities and then tap on the checkmark .



The 7750 PRO will list only those truck stops that offer the selected amenities.

[<back to menu>](#)

## 6.1) What is the Mileage Log?

The mileage log automatically tracks your mileage, keeping track of the date and the state. That way you can look back at how many miles you traveled, the dates, and in which state. The log can be saved to an SD card and then manipulated by a spreadsheet program such as Microsoft Excel. Here is a sample mileage log:

Date	State	Miles
11/17/2010	IL	273
11/18/2010	IL	112
11/19/2010	IL	48
11/24/2010	IN	97

With a spreadsheet program you can sort by state, total the miles, or otherwise manipulate the data.

[<back to menu>](#)

## 6.2) Viewing / resetting the Mileage Log

To view and / or reset the Mileage Log:

1. Tap anywhere on the map screen – you should be at the menu.
2. Tap on TOOLS (at the top).
3. Tap on **Mileage Log**.



You can list the mileage by state or by year. To toggle the display, tap on the button at the bottom.

**To reset the Mileage Log, tap on the reset button in the upper-left corner.**

[<back to menu>](#)

### 6.3) Saving the Mileage Log

To save the Mileage Log, you need to plug a blank SD card into the slot on the side of your unit. The Mileage Log will be saved to the SD card.

Any brand of SD card should be fine. The Mileage Log takes very little space, so even the smallest SD card that you find will be plenty big enough. It will not get filled up. Ample space will also be available for saving the Address Book.

To save the Mileage Log:

1. Tap anywhere on the map screen.
2. Tap on TOOLS (at the top).
3. Tap on MILEAGE LOG.
4. Tap on SAVE TO SD (at the bottom).

The Mileage Log will be saved to the SD card.

[<back to menu>](#)

## 6.4) Backing up the Mileage Log

To save a backup copy of the Mileage Log, you need to plug a blank SD card into the slot on the side of your unit. The Mileage Log will be saved to the SD card.

Any brand of SD card should be fine. The Mileage Log takes very little space, so even the smallest SD card that you find will be plenty big enough. It will not get filled up. Ample space will also be available for saving the Address Book.

To back up the Mileage Log:

1. Tap anywhere on the map screen.
2. Tap on TOOLS (at the top).
3. Tap on BACKUP / RESTORE.
4. Tap on BACKUP MILEAGE LOG.

To restore the Mileage Log, visit the same screen and tap on RESTORE MILEAGE LOG.

[<back to menu>](#)

## 6.5) Using the Hour Log

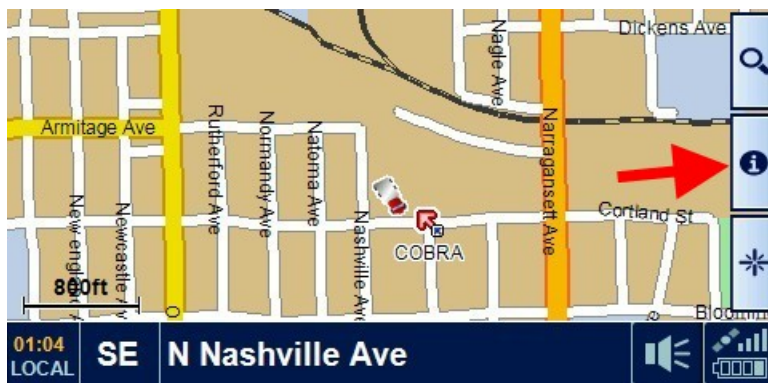
The Hour Log uses count-down timers to keep track of the following:

**On Duty Driving Day:** The maximum allowable daily driving time is 11 hours. This timer starts at 11 hours and will count down from there.

**On Duty Day:** The maximum allowable workday is 14 hours, which is a combination of driving plus other activities (loading, unloading, etc.) This timer starts at 14 hours and will count down from there.

**On Duty Week:** The maximum allowable work week is 60 hours. This timer starts at 60 hours and will count down from there.

To activate the timers, tap on the “i” (information) tab on the map screen:



Then tap on the activation field in the upper-right:



[See the following page for usage hints.](#)

If the activation field is set to **Off Duty**

- All timers are disabled.

You should choose **Off Duty** when you stop working.

If the activation field is set to **On Duty Drive**

- The **On Duty Driving Day** timer is activated and will count down.
- The **On Duty Day** timer is activated and will count down.

You should choose **On Duty Drive** when you are driving.

If the activation field is set to **On Duty**

- The **On Duty Day** timer is activated and will count down.
- The **On Duty Driving Day** timer is disabled and will not count down.

You should choose **On Duty** when you are stopped but you are still working (loading, unloading, etc.).

**NOTE:**

**For the timers to work properly, you must manually choose the correct mode depending on your current activity.**

[<back to menu>](#)

## 6.6) Resetting / Customizing the Hour Log

1. Tap anywhere on the map screen.
2. Tap on TOOLS at the top.
3. Tap on HOUR LOG.

You can reset individual timers, or reset ALL timers.

PLEASE NOTE that these are *countdown timers*, based on allowable work times. The factory default for these timers is as follows:

ON DUTY DRIVING DAY    **11:00 hours**

ON DUTY DAY                **14:00 hours**

ON DUTY WEEK             **60:00 hours**

To customize a timer, tap on the desired field. You will then see this screen:



To enter a custom time, tap on the HOUR field and then increase or decrease the value.

Tapping on the DEFAULT button will set the timer to the MAXIMUM TIME value.  
Tapping on the RESET button will reset the MAXIMUM TIME to the factory default.

When done, tap on the back arrow in the lower-right corner to save your changes.

[<back to menu>](#)

## 7.1) How to check the software version and update the software

Cobra offers free software updates which can be downloaded from our website. Please note that the operating software is separate from the map data. The operating software consists of all the screens and features that you see. If a software bug is discovered or if a new feature is added, you will see a new software update available to download.

To view the software version:

1. Tap anywhere on the map screen.
2. Tap on SETTINGS (at the top).
3. Tap on DEVICE.
4. Scroll down until you see VERSION. Tap on VERSION.

The software version should now be visible:



To download the latest software, please visit the Cobra website here:

<http://downloads.cobra.com/MobileNav/Nav7750/7750.htm>

[<back to top>](#)

## 7.2) How to check the map version and update the maps

To check the map version:

1. Tap anywhere on the map screen.
2. Tap on SETTINGS (at the top).
3. Tap on DEVICE.
4. Scroll down until you see VERSION. Tap on VERSION.

The map version should now be visible:



The mapping database is much too large to download from the internet. Map updates are supplied on an SD memory card.

To order a map update, please call Cobra Customer Service at 773-889-3087.

[<back to menu>](#)

## 8.1) It says “Some of the roads on this route are not on the National Network”



What this means is that part of the route is on secondary (local) roads. This is common when making pickups and deliveries.

For information about the National Network, please click [<HERE>](#).

[<back to menu>](#)

## 8.2) Poor routing

### **Problem – “I know a better way”**

As a general rule, a navigation product will usually not take the same route that you would choose on your own. For example if you drive the same route every day, then you have learned the best way to go based on traffic patterns. The nav unit will get you there, but it will probably choose a different way.

Navigation units are not designed to show you the way to familiar destinations. If you always know the best way to go, then you *do not* need a nav unit! Navigation units are very handy to guide you to unfamiliar destinations. If you follow the turn-by-turn instructions, you will arrive at your destination.

### **Problem – “I don’t like the route”**

The 7750 PLT offers flexibility in calculating a route. You can change the routing options, and you can also choose to avoid a particular road by choosing a “detour”.

For info on changing routing options, click [<HERE>](#).

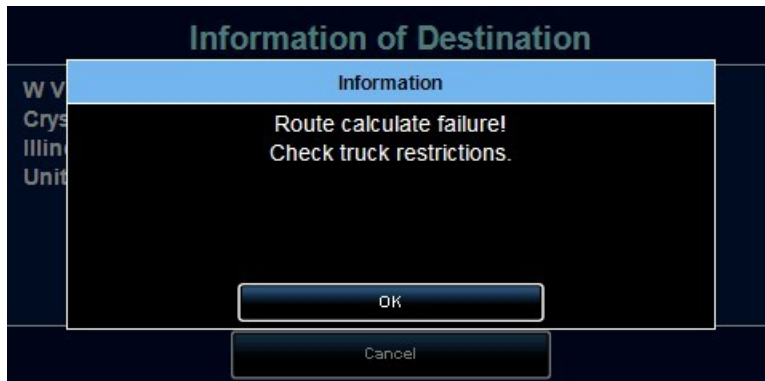
For info on doing a detour, click [<HERE>](#).

### **Problem – “Route Calculate Failure”**

Please click [<HERE>](#) for info.

[<back to menu>](#)

## 8.3) “Route Calculate Failure”



This error means that the nav unit cannot find a legal route based on the parameters of your truck. Here is an example:

### EXAMPLE

In West Virginia, the maximum legal truck length is 70 feet (due to the winding mountain roads). If you enter a length greater than 70 feet, the nav unit will not route anything into, out of, or through West Virginia. You will get a Route Calculate Failure.

### Recommendations

1. Double-check your truck settings.
  - a. Tap anywhere on the map screen.
  - b. Tap on CONFIGURE (in the upper-right).
  - c. Tap on TRUCK.

Make sure that you did not make a mistake when entering the length, width, or weight. For info on these settings, please click [<HERE>](#).

2. Try setting up a new truck, and just use the default settings. If the nav unit now routes, then you know that one of your settings was causing the problem.
3. Drive a little towards the destination and try again. This will only work if the restriction is near your current location. If the restriction is near the destination, then you will continue to get a Route Calculate Failure.
4. If you chose to travel to a city without entering a complete address, the nav unit may have arbitrarily chosen an address that is inaccessible by truck. Try entering an actual address.
5. If you call Cobra Customer Service at 773-889-3087, we can double-check the route for you. Please be prepared to provide the following information:
  - a. Your truck info (the truck type, weights, lengths, and load type).
  - b. The starting address (or at least the starting city).
  - c. The destination address.

[<back to menu>](#)

## 8.4) My unit will not turn on

1. Check the power switch on the back of the unit. Make sure it is switched ON.
2. Try plugging the AC adapter into the nav unit. If the nav unit turns on, then you know that it is good. If it does not turn on then there is a problem with the nav unit.
3. The cigarette socket may not have power. Try firmly pushing the cigarette plug into the socket and twist it a little.
4. The power cord may be faulty. Try a replacement power cord.

[<back to menu>](#)

## 8.5) Observing satellite lock status

1. Tap anywhere on the map screen.
2. Tap on CONFIGURE.
3. Scroll to the next page and choose GPS STATUS.



Take notice of the HEALTH status as shown above. It will tell you how many satellites are locked.

At the bottom of the screen it will show individual satellite locks as follows:

**White bar:** The nav unit has locked onto that satellite.

**Gray Bar:** The nav unit is in the process of locking onto that satellite.

**No Bar:** There is no satellite reception on that channel.

**The nav unit must lock onto at least 4 satellites before it will be ready to navigate.**

The RESET button will reset the satellite receiver. You will immediately lose all satellite reception. It may take 5 to 10 minutes to re-acquire satellites. Do not press RESET unless you really want to reset the satellite receiver!

[<back to menu>](#)

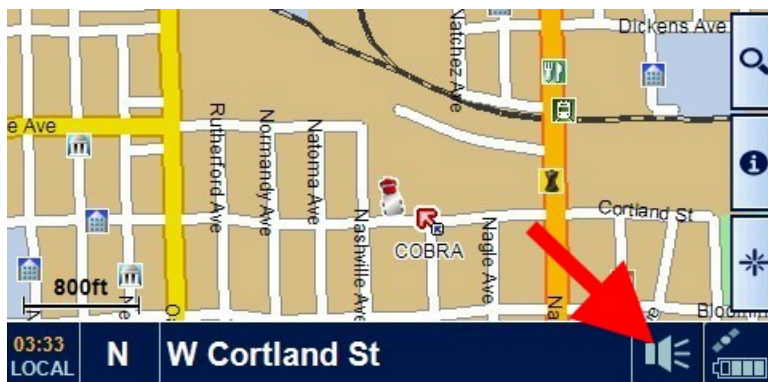
## 8.6) Auto-brightness is not working properly

The 7750 PLT will adjust the display brightness based on the time of day.

Your unit will not know the local time until it locks onto satellites, therefore the auto-brightness will not function until satellite lock is achieved.

You can also manually adjust the brightness as follows:

### STEP 1 – Tap on the speaker icon in the lower-right



### STEP 2 – Adjust the brightness



[<back to menu>](#)

## 8.7) I do not see POI icons on the map screen

By default, the 7750 PLT will show all POI icons on the map screen. This makes for a very cluttered screen.

1. Tap anywhere on the map screen.
2. Tap on CONFIGURE (in the upper-right).
3. Tap on SHOW POI.

You may now select which categories (if any) to show on the map screen.

**In order to see POI icons, you must be zoomed-in far enough.**

If you do not see any icons, try zooming in.

[<back to menu>](#)

## 8.8) Trouble locking onto satellites

There are several issues to check for:

1. When you purchased your nav unit, there was no satellite data stored inside. Your unit will be slow to acquire satellites until it has an opportunity to store satellite data. To let it store satellite data, simply let it run for at least 15 minutes AFTER it has locked onto satellites. After that, it should find satellites much faster.
2. Although your nav unit is very sensitive, your installation may not allow enough of the satellite signal to reach the unit. This can occur if the unit is not installed at the windshield. For best satellite reception, mount your unit at the windshield. You can also order the optional external antenna, part number EXT GPS ANT. Click [<HERE>](#) for info.
3. The antenna is located at the top of your nav unit. During installation, please arrange the mounting bracket so that it does not block the top of your unit.

To view satellite lock status in your unit, click [<HERE>](#).

[<back to menu>](#)

## 8.9) Master Reset

A master reset will clear everything in your nav unit.

**All settings will be set to factory defaults.**

**All saved addresses will be erased.**

**The mileage log will be cleared.**

1. Tap anywhere on the map screen.
2. Tap on SETTINGS (at the top).
3. Tap on DEVICE.
4. Scroll down until you see RESET. Tap on RESET.
5. Tap on ALL.
6. Tap on OK.
7. The nav unit should turn off.

DONE!

[<back to menu>](#)

## 9.1) STAA National Network

In 1982, the U.S. Congress passed the *Surface Transportation Assistance Act*, which allows large trucks to operate on the Interstate highways and certain primary routes. This road system is called the “National Network”.

When driving on the National Network, you can be reasonably assured of trouble-free road access. But to make local deliveries, you will probably need to leave the National Network and drive on secondary (local) roads. You must be careful to follow local regulations.

Any nav unit can guide you on the National Network (the Interstate highway system). It is when you get onto secondary roads that the 7750 PLT will really come in handy. The 7750 PLT will calculate a legal route for you to follow.

[<back to menu>](#)

## 9.2) Adjusting the volume

### STEP 1 – Tap on the speaker icon in the lower-right



### STEP 2 – Adjust the volume



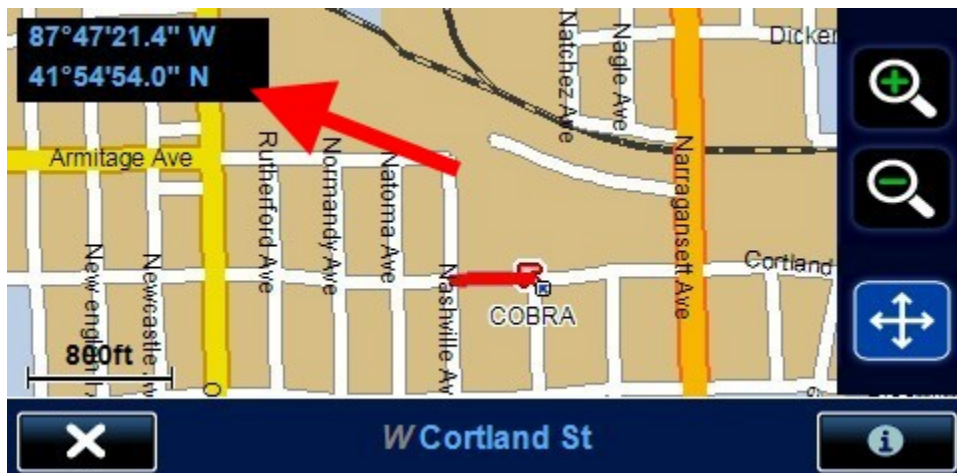
[<back to menu>](#)

### 9.3) Current Location

To view your current location:

1. Tap anywhere on the map screen.
2. Tap on FIND ON MAP (in the lower-right)
3. Tap on FIND ON MAP

You should see your GPS coordinates in the upper-left corner:



If you tap on the “i” in the lower-right corner, you will get some street information.

[<back to menu>](#)

## 9.4) Observing satellite lock status

1. Tap anywhere on the map screen.
2. Tap on TOOLS (at the top).
3. Tap on GPS STATUS.



Take notice of the HEALTH status as shown above. It will tell you how many satellites are locked.

At the bottom of the screen it will show individual satellite locks as follows:

**White bar:** The nav unit has locked onto that satellite.

**Gray Bar:** The nav unit is in the process of locking onto that satellite.

**No Bar:** There is no reception from that satellite.

**The nav unit must lock onto at least 4 satellites before it will be ready to navigate.**

The RESET button will reset the satellite receiver. You will immediately lose all satellite reception. Do not press RESET unless you really want to reset the satellite receiver!

[<back to menu>](#)

## 9.5) Elevation

From the map screen, tap on the bottom tab



and then tap on “Trip CPU”



You can now see the elevation:



The elevation accuracy is approximately  $\pm 150$  feet.

[<back to menu>](#)

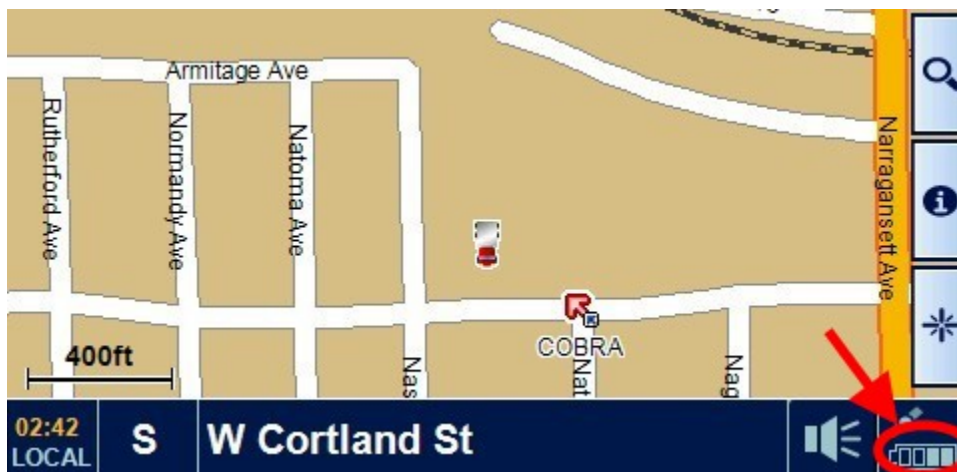
## 9.6) Power light status

There is a power light on the top right corner of the GPS. The status of the light is as follows:

MAIN POWER	POWER CORD	BATTERY CONDITION	POWER LIGHT
Off	Plugged in	Charging	RED
Off	Plugged in	Fully Charged	OFF
On	Plugged in	Charging	RED
On	Plugged in	Fully Charged	GREEN
On	Not plugged in	n/a	GREEN

The only time the power light is RED is when the battery is charging.

To check whether the unit is getting power from the power cord, view the battery icon in the lower-right corner of the map screen:



If the unit is getting external power, the icon will show charging activity.

[<back to menu>](#)

## 9.7) Backing up the Address Book

The 7750 PLT has a built-in function for backing up the Address Book. To use this function, you need to plug a blank SD card into the slot on the side of your unit. The address book will be saved to the SD card.

Any brand of SD card should be fine. The address book takes very little space, so even the smallest SD card that you find will be plenty big enough. It will not get filled up. Ample space will also be available for saving the mileage log.

To save the address book:

1. Tap anywhere on the map screen.
2. Tap on TOOLS (at the top).
3. Tap on BACKUP / RESTORE.
4. Tap on BACKUP ADDRESS BOOK.

To restore the address book, visit the same screen and tap on RESTORE ADDRESS BOOK.

[<back to menu>](#)

## 9.8) Saving / backing up the Mileage Log

For info on saving the Mileage log, please click [<HERE>](#).

For info on backing up the Mileage Log, please click [<HERE>](#).

[<back to menu>](#)

## 10.1) SD Card Slot

There is an SD (Secure Digital) card slot on the left-hand side of the nav unit. There are several functions for this card slot:

1. To load map updates. Click [<HERE>](#) for more info.
2. To save a backup of the address book. Click [<HERE>](#) for more info.
3. To save the mileage log. Click [<HERE>](#) for more info.
4. To save a backup of the mileage log. Click [<HERE>](#) for more info.

[<back to menu>](#)

## 10.2) External antenna option

There is an antenna jack on the back of the 7750 PLT, at the top. It is covered by a rubber plug.

The part number of the external antenna is **EXT GPS ANT**. To order an external antenna, please call Customer Service at 773-889-3087.

The antenna is only 1.5" x 1.75" and it has a magnetic base.

The cable is 13 feet long.



[<back to menu>](#)